

Operating Instructions

Air Top Pro 25

Air Heater



English

Contents

- 1 General information 3**
 - 1.1 Purpose of the document 3
 - 1.2 Using this document..... 3
 - 1.3 Warranty and liability..... 3

- 2 Safety 3**
 - 2.1 Intended use..... 3
 - 2.2 General safety information 3
 - 2.3 Regulations and legal requirements..... 4

- 3 Operation 4**
 - 3.1 Control elements..... 4
 - 3.2 Switch the heater on and off 4
 - 3.3 Using the heater in hazardous material vehicles
(ADR) 5
 - 3.4 Switching the heater on after automatic switch-off
..... 5
 - 3.5 Function at altitude..... 5

- 4 Fuel 5**
 - 4.1 Converting from operation with summer diesel to
winter diesel 5

- 5 Combustion air 5**

- 6 Exhaust..... 5**

- 7 Cleaning 5**

- 8 Malfunctions 5**

- 9 Maintenance 6**

- 10 Disposal..... 6**

- 11 Service and customer services 6**

- 12 Declaration of Conformity 7**

- 13 Type approval Air Top Pro 25 8**

1 General information

1.1 Purpose of the document

These Operating Instructions provide the user with information on the safe operation of the Air Top Pro 25.



NOTE

The actual availability of functions depends on each installed heater.



NOTE

Carefully read through and follow the heater operating instructions and the safety information contained therein.

1.2 Using this document

- ✓ Before operating the Air Top Pro 25, carefully read these operating instructions as well as the operating instructions for the control element.
- ✓ Hand these operating instructions on to the following owner or user of the Air Top Pro 25.

To access further documents use one of the following options:

The Webasto Dealer Portal

(<https://dealers.webasto.com>)

Operating instructions are available in various languages at: <https://www.webasto-comfort.com/de-de/produktuebersicht/#!>

1.3 Warranty and liability

Webasto shall not assume liability for defects or damages that are the result of disregarding the installation and operating instructions. This liability exclusion particularly applies to:

- Installation or maintenance by untrained personnel.
- Improper use.
- Repairs not carried out by a Webasto service workshop.
- Use of non-genuine parts.
- Conversion of the unit without permission from Webasto.
- Mechanical damage to the equipment.
- Failure to comply with service instructions.



DANGER

Always switch off the heater before refuelling.

2 Safety

2.1 Intended use



NOTE

The heater must not be used for safety-related purposes. It serves to provide comfort.

The heater works independently of the vehicle engine and is integrated in the electrical system of the vehicle.

The heater is approved for the following applications:

- Car, light truck (LCV)
- Trucks, buses in EU vehicle classes **M**, **N** and **O**
- Caravans, motor homes, boats, pleasure craft
- Earth-moving machinery
- Construction machines
- Industrial trucks
- Vehicles that can be used in commercial, light-industrial and industrial environments.
- Agriculture and forestry machines
- The heater is approved for cars (Class M1).

- Installation in Class O, N2 and N3 motor vehicles and vehicles for transporting hazardous substances is not permissible.
- If it is installed in special-purpose vehicles, the applicable regulations must be observed. Alternative applications are only possible with the prior approval of Webasto.
- Thermo Top Evo RV Classic with continuous heating is recommended for use in caravan & camping vehicles.
- The heater works together with the vehicle's heating system:
 - to heat the passenger compartment
 - to defrost vehicle windows
 - to preheat water-cooled
- engines (if technically possible).
- The heater can be installed as a parking heater or auxiliary heater.

2.2 General safety information

2.2.1 Safety information on operation



DANGER

Risk of injury from the defective unit

Do not operate a defective Air Top Pro 25 and put it out of service by removing the fuse:

- prolonged heavy smoke development.
- unusual burner noise.
- smell of fuel.
- permanent fault switch-offs with error messages (flash code).
- damaged heater.
- ▶ Contact a Webasto service workshop.



DANGER

Risk of explosion from explosive and flammable hazardous goods

For hazardous material vehicles, restriction of the heater operation (ADR) is required to prevent severe burns.

- ▶ Do not operate the heater at hazardous material loading points.
- ▶ Do not operate the heater when loading and unloading hazardous materials.



DANGER

Danger of fire

Flammable materials or liquids in the hot air flow.

- ▶ Keep the hot air flow clear.



DANGER

Burn injuries

Risk of burn injuries due to insufficient distance between hot air outlet and persons

- ▶ Persons must be protected from the direct hot air flow from the heater and from contact with surfaces that will become hot.
- ▶ Heat-sensitive parts must be protected from the direct hot air flow.



WARNING

Danger of explosion and suffocation

- Do not operate the heater:
- ▶ at filling stations and tank facilities.
 - ▶ at locations where highly flammable gases or dust can form, or at locations where highly flammable liquids or solid materials are stored (e.g. near fuel, coal and wood dust, grain storage areas, dry grass and leaves, cardboard boxes, paper, etc.).
 - ▶ in closed rooms such as garages that do not have an exhaust extraction unit, especially not with programmed heating start (time preselect or remote start).



WARNING

The heater may only be used under the specified conditions. In the event of deviations, the heater must be treated immediately as a defective heater and be taken out of operation by removing the fuse. The following are impermissible, for example:

- ▶ Operation at impermissible temperatures.
- ▶ Submerging the heater in water or other liquid media.



NOTE

Incorrect handling

- ▶ Protect the heater against mechanical stress (e.g. dropping, impacts or knocks).
- ▶ Do not stand on the heater.
- ▶ Do not place any objects on top of the heater.
- ▶ Avoid shutting down the heater incorrectly during the after-running period. After switching off via the control element, the fan of the heater continues to run.
- ▶ Always switch off the heater via the control element.
- ▶ Do not disconnect from the power supply until the after-running period has elapsed.
- ▶ Do not use heaters that have been dropped.



NOTE

Do not operate the unit without an inserted dummy plug for an unused wiring harness pass through.

2.2.2 Avoiding damage to property



NOTE

- After switching off via the control element, the fan of the heater continues to run (shortened to 40 s for ADR). Switching off incorrectly, without after-run, can cause damage to the Air Top Pro 25.
- ▶ Always switch off the heater via the control element.
 - ▶ The use of programmable control elements in ADR vehicles is not permitted.

2.3 Regulations and legal requirements

The type approvals in accordance with the regulations ECE-R 122 (heating) and ECE-R 10 (EMC) for the Air Top Pro 25 heater apply in the area where the European regulation 2018/858 is valid.



Read and comply with the warnings and information in the installation instructions and operating instructions.

3 Operation



DANGER

Hazardous material vehicles (ADR) must not be switched on or off using a timer control or remote control.

3.1 Control elements



NOTE

Use suitable Webasto control elements approved for use with the heater.

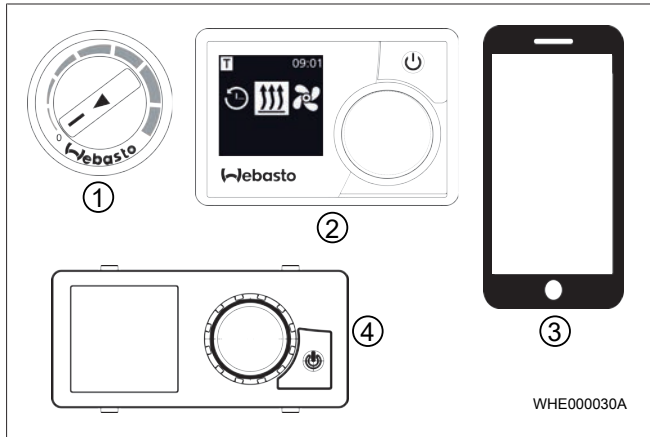


Fig. 1 Control elements

①	Digital rotary switch	③	ThermoConnect with app
②	MultiControl or Smart-Control	④	UniControl



Observe additional requirements from the operating and installation instructions for the Air Top Pro 25 and the control element.

The Air Top Pro 25 can be fitted with various control elements. A combination of control elements is possible.

3.2 Switch the heater on and off

The heater is switched on and off by different switch signals. Depending on the system equipment, the switch signals are produced by a Webasto control element or the vehicle's control system.



DANGER

Danger of suffocation and explosion

For ADR vehicles: The heater must only be switched on manually. The heater must not be switched on automatically via a programmable switch.



DANGER

Overheating possible

An emergency off switch may only be actuated in the event of danger since the heater will be switched off without after-running period.



NOTE

Always switch off the heater via the control element

After switching off via the control element, the heater switches to a short controlled run-on phase. Switching off incorrectly, without after-run, can cause damage to the heater.

3.3 Using the heater in hazardous material vehicles (ADR)

To use the ADR functions, an ADR-compatible heater variant must be installed.



NOTE

An ADR after-run occurs in the following cases:

- The generator signal (D+, alternator) is lost.
- A delivery device belonging to the vehicle (power take-off) is put into operation.

After the ADR after-run has finished, the heater is in ADR lockout mode.



NOTE

Release ADR lock:

- ▶ Put the pumping device belonging to the vehicle out of operation.
- ▶ Restart the heater by switching it off and on again using the control element.

3.4 Switching the heater on after automatic switch-off



NOTE

Possible loss of heating function

Following an automatic switch-off, the heater may need to be manually switched back on.

The heater can be restarted by switching it off and on again using the control element.

3.5 Function at altitude



NOTE

The heater Air Top Pro 25 has an automatic altitude function. The heater is approved for use up to an altitude of 5,500 m above sea level.

4 Fuel

The heater is connected to the fuel tank of the vehicle or to a separate fuel tank.

Suitable fuels:

- Air Top Pro 25 D: Diesel DIN EN 590 and HVO DIN EN 15940
- Air Top Pro 25 B: Petrol DIN EN 228 and ethanol fuel E85 DIN EN 15293 – E100 DIN EN 15376

4.1 Converting from operation with summer diesel to winter diesel

- ✓ The tank is filled up with winter diesel (cold-resistant fuel). However, the fuel system for the heater may still contain residues of summer diesel.
- ▶ Switch on the heater for approx. 15 minutes (the fuel system is completely filled with cold-resistant fuel).

5 Combustion air



DANGER

Danger of fire

Flammable materials or liquids in the combustion air flow.

- ▶ Keep combustion air flow clear.

6 Exhaust



WARNING

Blockages

Check combustion air and exhaust system for blockages.

A blocked exhaust system or combustion air system can cause unsafe status of the heater!

7 Cleaning



NOTE

Do not clean the Air Top Pro 25 with a high-pressure cleaner.

Carefully clean the heater using water and a cleaning agent suitable for cleaning vehicles.

With intake filter fitted on the cold air inlet: clean the intake filter.

8 Malfunctions



WARNING

Check combustion air and exhaust system for blockages.

A blocked exhaust system or combustion air system can cause unsafe status of the heater!

A fault is indicated by a flashing code or on the display of the control panel:

- For control panels with a display, the fault codes are issued via the display.
- For control panels without a display (analogue), the fault code is indicated in the form of a flashing pulse. The pulses are short or long. The number of long flashing pulses corresponds to the number of the fault code. F00 is just a fast flash.
- If a fault occurs, check the fuses and plug connections.
- If the fault cannot be rectified by the measures described, contact a Webasto service workshop.



NOTE

Independent maintenance work, particularly using flammable gases or liquids such as accelerators, is forbidden.

Blink code	Hex	Fault description	Recommended action	Warning
F00 or 0*	00h	No fault stored	Switch the heater off and on using the control element.	
F01 or 1*	02h	Heater does not start	Check fuel tank level	
F02 or 2*	03h	Heating operation terminated	Check fuel tank level	
F03 or 3*	84h	Heater does not start, heating operation terminated	Check battery charge level	Danger: Electric shock
F10 or 10*	06h	Heater lock-out	Check the heater exhaust pipe and warm air duct for blockages, avoid kinked or	Danger: Combustion

Blink code	Hex	Fault description	Recommended action	Warning
			blocked warm air ducts, open the air outlet	
-	17h	Heater does not start, heating operation terminated	Check the air intake (combustion air), the heater exhaust pipe and the warm air ducting to ensure they are clear.	Danger: Combustion
-	-	For vehicles transporting dangerous goods: Heater does not start, heating operation terminated	Ensure that the delivery unit is out of operation. Wait until the heater switches to ADR fault lock-out. Switch the heater off and on using the control element.	
-	-	The heater is emitting black smoke from the exhaust	Check the combustion air and exhaust system for free passage	Danger: Combustion

Do you have any technical questions or problem with the device?

National phone numbers of our representatives are provided on:
<https://www.webasto-group.com/en/the-company/locations-worldwide/>

In the event of a malfunction, the control element can indicate a malfunction.

9 Maintenance

- Put the heater into operation every 4 weeks in order to prevent mechanical parts from seizing.
- At the beginning of the heating period, have the heater checked by a professional.
- The heat exchanger of the air heater can be used for a maximum period of 10 years. After this, it must then be replaced with a genuine spare part by the manufacturer or an authorised workshop. The heater must then be issued with a sign which bears the date of sale and the word "Original spare part".

10 Disposal

The Air Top Pro 25 must not be disposed of in household waste.

Observe the regional regulations for disposal of electronic products.

11 Service and customer services

The device is registered during installation by the Webasto service workshop. You will receive the registration document.

Pass the registration document on to the next owner or user of the device.

13 Type approval Air Top Pro 25

E1 122R - 00 0662



Kraftfahrt-Bundesamt

DE-24932 Flensburg



MITTEILUNG

ausgestellt von:
Kraftfahrt-Bundesamt

über die Erteilung einer Genehmigung für einen Typ eines Bauteils nach der
Regelung Nr. 122 einschließlich Änderung Nr. 00 Ergänzung 07

COMMUNICATION

issued by:
Kraftfahrt-Bundesamt

concerning the granting of an approval of a component type pursuant to
Regulation No. 122 including amendment No. 00 supplement 07

Genehmigungsnummer: **E1*122R00/07*0662*00**
Approval number:

Grund (Gründe) für die Erweiterung (gegebenenfalls):
Reason(s) of extension (if any):
Entfällt
Not applicable

Abschnitt I
Section I

Allgemeines
General

- 1.1. Marke (Firmenname des Herstellers):
Make (trade name of manufacturer):
Webasto Roof & Components SE
- 1.2. Typ:
Type:
Air Top Pro 25
- 1.3. Merkmale zur Typidentifizierung, falls an der Einrichtung vorhanden:
Means of identification of type, if marked on the device:
Handelsbezeichnung
General commercial description

R122 E1*122R00/07*0662*00

Fig. 3 Type approval ATP 25 (Page 1)

E1 122R - 00 0662

Webasto
Feel the Drive



Kraftfahrt-Bundesamt
DE-24932 Flensburg

2

Genehmigungsnummer: **E1*122R00/07*0662*00**
Approval number:

- 1.3.1. Stelle, an der diese Merkmale angebracht sind:
Location of that marking:
Auf dem Gehäuse und nach dem Einbau zusätzlich am Fahrzeug
On the housing and after the installation additional on the vehicle
- 1.4. Name und Anschrift des Herstellers:
Name and address of manufacturer:
Webasto Roof & Components SE
DE-Gauting, Landkreis Starnberg/82131 Stockdorf
- 1.5. Stelle, an der das ECE-Genehmigungszeichen angebracht ist:
Location of the ECE approval mark:
Auf dem Gehäuse
On the housing
- 1.6. Anschrift(en) der Fertigungsanlage(n):
Address(es) of assembly plant(s):
Webasto Roof & Components SE
DE-17033 Neubrandenburg

Abschnitt II
Section II

1. Zusätzliche Angaben (gegebenenfalls):
Additional information (if any):
Entfällt
Not applicable
2. Technischer Dienst, der die Prüfungen durchführt:
Technical service responsible for carrying out the tests:
DEKRA Automobil Test Center der DEKRA Automobil GmbH
DE-01998 Klettwitz
3. Datum des Gutachtens:
Date of test report:
16.08.2024
4. Nummer des Gutachtens:
Number of test report:
202458672
5. Bemerkungen (gegebenenfalls):
Remarks (if any):
Handelsbezeichnung(en):
General commercial description(s):
Air Top Pro 25

R122 E1*122R00/07*0662*00

Fig. 4 Type approval ATP 25 (Page 2)

E1 122R - 00 0662



Kraftfahrt-Bundesamt

DE-24932 Flensburg

3

Genehmigungsnummer: E1*122R00/07*0662*00
Approval number:

- 6. Die Genehmigung wird erteilt
Approval is granted
- 7. Ort: DE-24932 Flensburg
Place:
- 8. Datum: 23.08.2024
Date:
- 9. Unterschrift: Im Auftrag
Signature:

Jörg Burgkhardt



R122_E1*122R00/07*0662*00

Fig. 5 Type approval ATP 25 (Page 3)

To request this documentation in another language, please locate and contact your local Webasto dealer. You can find your nearest dealer at: <https://dealerlocator.webasto.com/en-int>.
To provide feedback (in English or German), please email: feedback2tdt@webasto.com

Europe, Asia Pacific:

Webasto
Krallinger Str. 5
82131 Stockdorf
Germany

UK only:

Webasto Thermo & Comfort UK Ltd
Webasto House
White Rose Way
Doncaster Carr
South Yorkshire
DN4 5JH
United Kingdom

Only within Germany
Tel: 0395 5592 444
Mail: technikcenter@webasto.com



3319845A